

Matrix Power Company
MO xxx-VA+12V series
Specification Document

TABLE OF CONTENTS

1. Scope

2. Applicable document:

3. Electric specification:

3.1 DC input requirement:

- 3.1.1 DC input requirement
- 3.1.2 Over current protection
- 3.1.3 Inrush current limiting
- 3.1.4 Input under voltage
- 3.1.5 Electrical fast transient/burst

3.2 DC output requirements:

- 3.2.1 DC voltage regulation
- 3.2.2 remote sense

3.3 Power description:

- 3.3.1 Output requirement
- 3.3.2 Efficiency
- 3.3.3 Output ripple and noise
- 3.3.4 Output transient response
- 3.3.5 +5Vdc and +3.3Vdc power sequencing
- 3.3.6 voltage hold-up time

3.4 Timing / housekeeping / control

- 3.4.1 Power_OK
- 3.4.2 Power_ON
- 3.4.3 +5Vsb
- 3.4.4 Power ON time
- 3.4.5 Rise time
- 3.4.6 Overshoot at turn_on/turn_off
- 3.4.7 Reset after shutdown
- 3.4.8 +5vsb at power down

3.5 Output protection:

3.5.1 Over voltage protection

3.5.2 Short circuit protection

3.5.3 No load operation

3.5.4 Over current protection

3.5.5 Over load protection

3.5.6 Output bypass

4. Mechanical requirement:

4.1 Label and marking

4.2 Physical dimension

4.3 Air flow / fan

4.4 Connector

5. Environment requirement

5.1 Environment requirement

5.2 Thermal shock (shipping)

5.3 Humidity

5.4 Altitude

5.5 Mechanical shock

5.6 Vibration

6. Electromagnetic compatibility

7. Reliability

7.1 Mean time between failure (MTBF)

7.2 Compatibility

7.3 Safety requirement

1. SCOPE:

This document outlines the power supply specification of MOxxx-VA+12V-series.

2. Applicable Documents:

See ATX Specification Version 2.03/_12V version 1.3, BTX 1.0/ 1.1/ 2.0 and Intel ATX Power Supply Design Guide Version 0.9.

3. Electric specification:

The electrical requirements that follow are to be met over the environmental ranges specified in Section 5 unless otherwise noted.

3.1 DC input requirement:

3.1.1 DC input requirement:

- a. The power supply shall be capable of supplying full rated output power over input voltages ranges rated +10 Vdc to +22 Vdc at 0 ~ 50 .

3.1.2 DC over current Protection:

The power supply shall incorporate primary fusing for input overcurrent protection. Fuses should be slow-blow type or equivalent to prevent nuisance trips.

3.1.3 Inrush Current Limiting:

Maximum inrush current from power-on, shall be limited to a level below the surge rating of the input line cord, fuse, and EMI filter components. Repetitive ON/OFF cycling of the DC input voltage should not damage the power supply or cause the input fuse to blow.

3.1.4 Input under voltage:

The power supply shall contain protection circuitry such that the application of an input voltage below the minimum specified in Section 3.1, Table 1, shall not cause damage to the power supply.

3.1.5 Electrical fast transient/burst:

No unsafe operation is allowed under any condition. No user-noticeable performance degradation up to +- 1 kV Mains, +- 500V Signal Cable, is allowed. Automatic or manual recovery is allowed for other conditions.

3.2 DC Output Requirements

3.2.1 DC Voltage Regulation

The DC output voltages shall remain within the regulation ranges shown in Table 3 when measured at the load end of the output connectors under all line, load, and environmental conditions. The voltage regulation limits shall be maintained under continuous operation for a period of time equal to or greater than the MTBF specified in Section 7.2 at any steady state temperature and operating conditions specified in Section 5.

Table 3: DC Output Voltage Regulation

Output	Range	Min.	Nom.	Max.	Unit
+12Vdc	±5%	+11.40	+12.00	+12.60	Volts
+5Vdc	+5-4%	+4.80	+5.00	+5.25	Volts
+3.3Vdc	+5-4%	+3.17	+3.30	+3.46	Volts
-5Vdc	±5%	-4.75	-5.00	-5.25	Volts
-12Vdc	±10%	-11.40	-12.00	-13.20	Volts
+5Vsb	±5%	+4.75	+5.00	+5.25	Volts

3.2.2 Remote Sensing

- a. For the +12V, +5 V and +3.3 V, the power supply shall use remote sensing wires to achieve regulation at the output connector to compensate for voltage drop of cable, connector, and PCB trace. If the remote connection is lost to any of these outputs, then internal resistive feedback causes the power supply to regulate and prevent OVP.
- b. The power supply should have remote sense return (Returns) to regulate out ground drops for all output voltages, +12V, +3.3V, and +5V. The power supply will use remote sense (+3.3Vs, +5Vs, +12Vs) to regulate out drops in the system for the +3.3V, and +5V outputs. Remote sense must be able to regulate out a minimum of 250mV of drop on the +3.3V and +5V outputs. The remote sense return (Returns) must be able to regulate out a minimum of 100mV of drop in the power ground return. The current in any remote sense line shall be less than 10mA to prevent voltage sensing errors. The power supply must operate within specification over the full range of voltage drops from the power supply's output connector to the remote sense points.

3.3 Power Description:

3.3.1 Output requirement:

Table 4.1: MO150+12V Power Distribution Configuration

Outputs	MIN	MAX	Watt	Peak
3.3V	0.0A	20.0A	66.0	20.0A
5.0V	1.0A	25.0A	125.0	30.0A
-5.0V	0.0A	0.5A	2.5	1.0A
12.0V	0.0A	10.0A	120.0	15.0A
-12.0V	0.0A	0.8A	9.6	1.5A
5.0Vsb	0.0A	2.00A	10.0	2.5A

Total = 150 Watt

Maximum combined wattage of 3.3V and 5.0V outputs is 125W.

Table 4.2: MO200+12V Power Distribution Configuration

Outputs	MIN	MAX	Watt	Peak
3.3V	0.0A	20.0A	66.0	30.0A
5.0V	1.0A	25.0A	125.0	30.0A
-5.0V	0.0A	0.5A	2.5	1.0A
12.0V	0.0A	15.0A	180.0	16.0A
-12.0V	0.0A	0.8A	9.6	1.5A
5.0Vsb	0.0A	2.00A	10.0	2.5A

Total = 200 Watt

Maximum combined wattage of 3.3V and 5.0V outputs is 125W.

Table 4.3: MO250+12V Power Distribution Configuration

Outputs	MIN	MAX	Watt	Peak
3.3V	0.0A	20.0A	66.0	30.0A
5.0V	1.0A	25.0A	125.0	30.0A
-5.0V	0.0A	0.5A	2.5	1.0A
12.0V	0.0A	18.0A	216.0	20.0A
-12.0V	0.0A	0.8A	9.6	1.5A
5.0Vsb	0.0A	2.00A	10.0	2.5A

Total = 250 Watt

Maximum combined wattage of 3.3V and 5.0V outputs is 125W.

Table 4.4: MO300+12V Power Distribution Configuration

Outputs	MIN	MAX	Watt	Peak
3.3V	0.0A	28.0A	92.4	40.0A
5.0V	1.0A	30.0A	150.0	40.0A
-5.0V	0.0A	0.5A	2.5	1.0A
12.0V	0.0A	22.0A	264.0	25.0A
-12.0V	0.0A	0.8A	9.6	1.5A
5.0Vsb	0.0A	2.00A	10.0	3.0A
Total = 300 Watt				

Maximum combined wattage of 3.3V and 5.0V outputs is 150W.

Table 4.5: MO350+12V Power Distribution Configuration

Outputs	MIN	MAX	Watt	Peak
3.3V	0.0A	28.0A	92.4	40.0A
5.0V	1.0A	35.0A	150.0	40.0A
-5.0V	0.0A	0.5A	2.5	1.0A
12.0V	0.0A	28.0A	336.0	28.0A
-12.0V	0.0A	0.8A	9.6	1.5A
5.0Vsb	0.0A	2.00A	10.0	3.0A
Total = 350 Watt				

Maximum combined wattage of 3.3V and 5.0V outputs is 175W.

3.3.2 Efficiency

- a. The efficiency of the power supply should be met over the DC input range defined in Table 1, under the load conditions defined in Section 3.3, and under the temperature and operating conditions defined in Section 5. The power supply should be a typical of 65% efficient under full load as defined in the applicable configuration.
- b. The +5Vsb standby supply efficiency should be 40% at 2.0A output. Standby efficiency is measured with the main outputs off and with PWR_ON high. The DC input power shall not exceed 12 W when the main outputs are in the "DC disabled" state with 1.0 A load on +5VSB.

3.3.3 Output Ripple/Noise

- a. The following output ripple/noise requirements should be met throughout the load ranges specified in Section 3.3, and under all input voltage conditions as specified in Section 3.1.
- b. Ripple and noise are defined as periodic or random signals over a frequency band of 10 Hz to 20 MHz. Measurements shall be made with an oscilloscope with 20 MHz bandwidth. Outputs should be bypassed at the connector with a 0.1 uF ceramic disk capacitor and a 47 uF electrolytic capacitor to simulate system loading.

Table 5: DC Output Noise/Ripple

Output	Max Ripple & Noise (mVpp)
+12VDC	120
+5VDC	50
+3.3VDC	40
-5VDC	50
-12VDC	120
+5VSB	50

3.3.4 Output Transient Response

The +3.3VDC, +5VDC and +12V outputs will see transients up to 50% of the maximum output current. The transient slew rate will be 2.5 A/ms. The power supply should be stable under all transient conditions from any steady state load, and the over/undershoot should be within the regulation band stated in Section 3.2.1.

3.3.5 +5VDC/+3.3VDC Power Sequencing

The +5VDC output level must be equal to or greater than the +3.3VDC output at all times during power-up and normal operation. The time between the +5VDC output reaching its minimum in-regulation level and +3.3VDC reaching its minimum in-regulation level must be less than or equal to 20 msec.

3.3.6 Voltage Hold-up Time

The power supply shall maintain output regulation per Section 3.2.1 despite a loss of input power at the nominal range at maximum continuous output load as applicable for a typical of 1.0 ms.

3.4 Timing / Housekeeping / Control

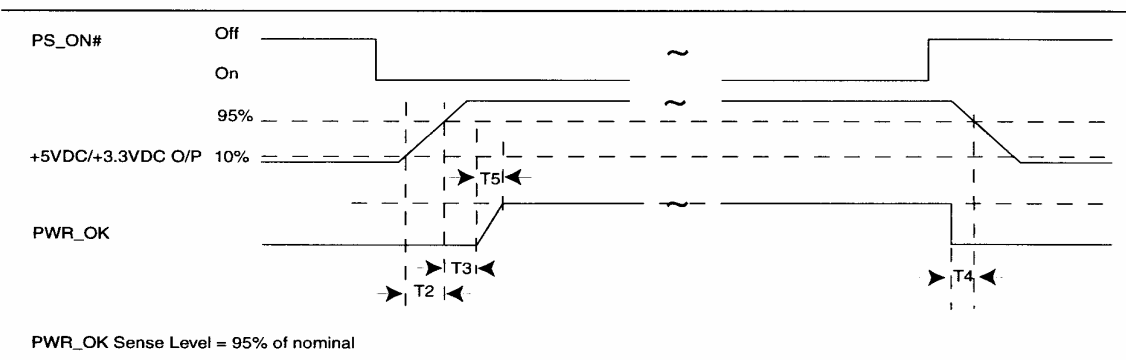


Figure 1: Power Supply Timing

Notes:

- T2 is defined in Section 3.4.5
- T3, T4, and T5 are defined in Table 7

3.4.1 PWR_OK

PWR_OK is a "power good" signal. It is asserted high by the power supply to indicate that the +5VDC and +3.3VDC outputs are above the undervoltage thresholds listed in Section 3.2.1 and that sufficient mains energy is stored by the converter to guarantee continuous power operation within specification for at least the duration specified in Section 3.3.6. Conversely, PWR_OK should be deasserted to a low state when either the +5VDC or the +3.3VDC output voltages falls below the undervoltage threshold, or when mains power has been removed for a time sufficiently long such that power supply operation cannot be guaranteed beyond the hold-up time. The electrical and timing characteristics of the PWR_OK signal are given in Table 7 and in Figure 1.

Table 7: PWR_OK Signal Characteristics

Signal Type	+5 V TTL compatible
Logic level Low	< 0.4 V while sinking 4mA
Logic level high	Between 2.4 VDC and 5 VDC
	Output while sourcing 200uA
High state output impedance	1K Ω from output to common
PWR_OK delay	100 ms < T3 < 500 ms
PWR_OK rise time	T5 \leq 10 ms
Power down warning	T4 > 1 ms

3.4.2 PWR_ON

- a. PWR_ON is an active-low, TTL-compatible signal that allows a motherboard to remotely control the power supply in conjunction with features such as soft on/off, wake-on-LAN, or wake-on-modem. When PWR_ON is pulled to TTL low, the power supply should turn on the five main DC output rails: +12VDC, +5VDC, +3.3VDC, -5VDC, and -12VDC. When PWR_ON is pulled to TTL high or open circuited, the DC output rails should not deliver current and should be held at zero potential with respect to ground. PWR_ON has no effect on the +5VSB output, which is always enabled whenever the DCin power is present.
- b. Power supply shall provide an internal pull-up to TTL high. The power supply shall also provide debounce circuitry on PWR_ON to prevent it from oscillating on/off at startup due to activation by a mechanical switch. The DC output enable circuitry must be SELV-compliant.

3.4.3 +5VSB

+5VSB is a "standby" supply output that is active whenever the DCin power is present. It provides a power source for circuits that must remain operational when the five main DC output rails are in a disabled state. Example uses include soft power control, wake-on-LAN, wake-on-modem, intrusion detection, or suspend state activities. +5VSB is required for the implementation of PWR_ON.

The +5VSB output should be capable of delivering 2.0A at +5 V \pm 5% to external circuits.

3.4.4 Power-on Time

The power-on time is defined as the time from when PWR_ON is pulled low to when the +5VDC and +3.3VDC outputs are within the regulation ranges specified in Section 3.2.1. The power-on time shall be less than 500ms. +5VSB shall have a power-on time of 2 seconds maximum after application of valid DC voltages.

3.4.5 Risetime

The output voltages shall rise from <10% of nominal to within the regulation ranges specified in Section 3.2.1 within 0.1 ms to 20 ms ($0.1 \text{ ms} < T_2 \leq 20 \text{ ms}$)

3.4.6 Overshoot at Turn-on/Turn-off

The output voltage overshoot upon the application or removal of the input voltage, or the assertion / deassertion of PWR_ON, under the conditions specified in Section 3.1, less than 10% above the nominal voltage. There is a smooth and continuous ramp of each DC output voltage from 10% to 90% of its final set point within the regulation band, while loaded as specified in Section 3.3. The smooth turn-on requires that during the 10% to 90% portion of the rise time, the slope of the turn-on waveform is positive and have a value of between 0 V/ms and $[V_{\text{out, nominal}}] \text{ V} / 0.1 \text{ ms}$. Also, for any 5 ms segment of the 10% to 90% rise-time waveform, a straight line drawn between the end points of the waveform segment must have a slope $\geq [V_{\text{out, nominal}}] \text{ V} / 20 \text{ ms}$. No voltage of opposite polarity present on any output during turn-on or turn-off.

3.4.7 Reset After Shutdown

If the power supply latches into a shutdown state due to fault condition on its outputs, the power supply shall return to normal operation only after the fault has been removed and the PWR_ON (or DC input) has been cycled OFF/ON with a minimum OFF time of 3 second.

3.4.8 +5VSB at DCin Power Down

After DCin power is removed, the +5VSB standby voltage output should remain at its steady state value for the minimum holdup time specified in Section 3.3.6 until it begins to decrease in voltage. The decrease shall be monotonic in nature, dropping to 0.0 V. There shall be no other perturbations of this voltage at or following removal of DCin.

3.5 Output Protection

3.5.1 Over voltage Protection

The over voltage sense circuitry and reference shall reside in packages that are separate and distinct from the regulator control circuitry and reference. No single point fault shall be able to cause a sustained overvoltage condition on any or all outputs. The supply shall provide latch-mode overvoltage protection as defined below.

Table 9: Overvoltage Protection

Output	Min.	Nom.	Max.	Unit
+12VDC	14.0	-----	15.0	Volts
+5VDC	5.8	-----	6.9	Volts
+3.3VDC	3.8	-----	4.3	Volts

3.5.2 Short Circuit Protection

An output short is defined as any output impedance of less than 0.1 ohms. The power supply shall shut down and latch off for shorting the +3.3VDC, +5VDC, +12VDC, -12V rails to return or any other rail. The power supply will shut down and latch off .

The +5VSB must be capable of being shorted indefinitely, but when the short is removed, the power supply shall recover automatically .

The power supply shall be capable of withstanding a continuous short-circuit to the output without damage or overstress to the unit (components, PCB traces, connectors, etc.) under the input conditions specified in Section 3.1.

3.5.3 No Load Operation

The power supply shall be turn on, and no damage or hazardous condition should occur with all the DC output connectors disconnected from the load.

3.5.4 Over current Protection: **OPTIONAL

If any one output of +5Vdc, +12Vdc and +3.3Vdc is over current then maximum load, the power supply is shut down by over current protection design, the output voltage shall drop to 0V at +5Vdc, +12Vdc, +3.3Vdc, +5Vsb, -5Vdc and -12Vdc output, and no any damage to the power supply.

3.5.5 Over load protection:

The total power output is limit at 105~150%.

3.5.6 Output Bypass

The output return is connected to the power supply chassis. The return will be connected to the system chassis by the system components.

4. Mechanical requirement:

4.1 Label and marking:

The label must be follow safety (UL, cUL, TUV, CE) request.

4.2 Physical dimensions

The supply shall be enclosed and meet the physical outline of 1U IPC
1U: MO150~ 350+12V ; 40.0*100*180/190mm
OPEN-FRAME: MO150~ 350+12V : 40.0*95*155mm

4.3 Airflow / Fan

Airflow will be provided by 4cm fans in each power module and fans out the computer chassis.

4.4 Cable: following ATX specification.

5. Environment requirements:

5.1 Environment requirement:

Operating ambient temperature: 0 ~ 50

The power supply be capable of supplying full rated output power over input voltages ranges rated nominal at 25 .

Nonoperating ambient temperature: -40 ~ +70

(Maximum rate of change of 20°C/hr.)

5.2 Thermal shock (shipping):

Nonoperating:

-40 °C to +70 °C; 15 °C/min < dT/dt < 30 °C/min;

50 cycles; Duration of exposure to temperature extremes for each half cycle shall be 30 minutes.

5.3 Humidity:

Operating: To 85% relative humidity (noncondensing)

Nonoperating: To 95% relative humidity (noncondensing)

Note: 95% RH is achieved with a dry bulb temperature of 55 °C and a wet bulb temperature of 54 °C.

5.4 Altitude:

Operating: To 10,000 ft

Nonoperating : To 50,000ft

5.5 Mechanical Shock

Nonoperating :

50 g, trapezoidal input; velocity change > 170 in/s. Three drops on each of six faces are applied to each sample.

Operational:

The unit will be able to withstand 10g acceleration peak (11msec pulse duration).

5.6 Vibration

Nonoperating :

0.01 g² / Hz at 5Hz, sloping to 0.02 g²/Hz at 20Hz, and maintaining 0.02 g² / Hz from 20 Hz to 500 Hz. The area under the PSD curve is 3.13 gRMS. The duration shall be 10 minutes per axis for all three axes on all samples. Also meet 5 - 17Hz, 0.1” double amplitude displacement; 17-500Hz, 1.5G acceleration; 5 to 500Hz random, 1G(RMS) acceleration.

6 . Electromagnetic Compatibility

Meet CE .

Meet FCC .

Meet CNS13438 .

7 . Reliability

7.1 Mean time between failure (MTBF):

MTBF shall be follow 570F standard.

a. Full load.

b. +12Vdc input.

c. Ground benign.

d. Ambient temperature: 25

The calculated MTBF of the power supply shall be greater than 100,000 hours under the following conditions:

a. Full load.

b. +12Vdc input

c. Ground benign

d. 25°C ambient.

7.2 Compatibility

All versions of the power supply will be backward compatible for form, fit, and function of the ATX/0.9/1.0/1.1/2.01/2.02/2.03/_12V/1.0/1.1/1.2/1.3, BTX/1.0/1.1/2.0 Version.

7.3 Safety Requirements

The power supply must be meet UL, c-UL, TUV, CE, CB, FCC, CNS .

7.4 Website: mapc.com.tw